

# NOVELTY CATALOG 2026

CATALOG

# PISHGAMAN MEMARI ARYA

WE WILL ALWAYS BE THERE, FOR YOU

Founded in 2008, Pishgaman Memari Arya (PMA) has grown into a leading producer of premium full-body porcelain ceramics. Today, under its unified global identity PMA | IMPERIO, the company combines Iranian manufacturing expertise with European design excellence.

With its strategic office in Castellón, Spain, PMA | IMPERIO ensures direct access to top-quality raw materials and closer ties to the European export market. Inspired by renowned Italian and Spanish design studios, our collections embody luxury, elegance, and modernity, tailored for residences, villas, hotels, and exclusive projects worldwide.

Our wide range of sizes from 20x120 up to 160x320 cm meets diverse applications, all certified with European standards and regularly tested in accredited international laboratories. Beyond product quality, PMA | IMPERIO is committed to customer experience. An skilled civil engineers team provides personalized consulting, technical support, and on-site services to ensure the best outcome for every project. Through continuous training, seminars, and workshops, we strengthen the connection between design innovation and practical application.

PMA | IMPERIO: for those who seek originality, glamour and timeless sophistication.



# Variety of Sizes

To Create an Architectural Dream

PMA | IMPERIO celebrates the uniqueness of every architectural narrative. Our porcelain ceramics span a breathtaking spectrum of sizes, ensuring every design ambition materializes. With PMA | IMEPRIO, embrace boundless possibilities.

The following sizes are available according to your order:  
40x40 – 60x60 – 150x150 – 160x160 - 150x300

# General Index

03	PISHGAMAN MEMARI ARYA	31	<b>PMA Collections</b>	75	<b>Stone Effect</b>
05	Variety Of Sizes	32	PMA   IMPERIO's Precision Craftsmanship & Cutting Services Beyond Compare	76	Romano
09	<b>IMPERIO Collections</b>	33	Usage / Any Shape	85	Riven Slate
10	Modern & Luxury	35	Design Alcove	92	Crafting Iconic Facades & Beyond
13	Products	37	<b>Marble Effect</b>	95	Technical Information
15	<b>Cement Effect</b>	38	Sovereign Cream	97	Use And Maintenance
17	Eminent	47	Mont Blanc	98	Technical Characteristics
22	Terrazzo	55	Soaring With PMA   IMPERIO	100	Packing
29	A Resounding Legacy In Iran's Ceramic Expanse	57	<b>Cement Effect</b>	105	Symbology
		58	Microcement		
		73	Elevating Standards, Crafting Excellence		
		73	Standards/ Test Reports		

# **IMPERIO**

collections

# Modern & Luxury

Essence of Modern Opulence

Redefining Elegance and Innovation in Ceramics. At PMA | IMPERIO, we understand that our discerning clientele seeks more than just functionality in ceramics; they desire a blend of luxury and contemporary design that elevates their living spaces. Our exclusive collection embodies this ethos, offering an unparalleled fusion of sophisticated style and cutting-edge innovation. Each piece is crafted with meticulous attention to detail, ensuring not only an aesthetic that resonates with modern luxury but also a quality that stands the test of time. From the sleek contours of our designs to the opulent finishes that characterize our range, PMA | IMPERIO ceramics are a testament to our commitment to excellence in every aspect. Step into a world where elegance meets modernity, and let PMA | IMPERIO transform your spaces into a haven of upscale refinement and contemporary charm.



Products



## Cement Effect

Urban Simplicity, Elevated

### 02 \_\_\_\_\_

Inspired by the honest texture of cast concrete, the Cement Collection embraces industrial minimalism with an architectural edge. Its matte surfaces and soft tonal shifts reflect the soul of the modern cityscape.

Ideal for contemporary interiors and commercial spaces alike, it offers understated sophistication and resilient performance bringing urban spirit into refined environments.





Wall: Eminent Platinum  
Soft Matte | 120x280 cm

Floor: Microcement Milk  
Soft Matte | 120x280 cm

## Eminent

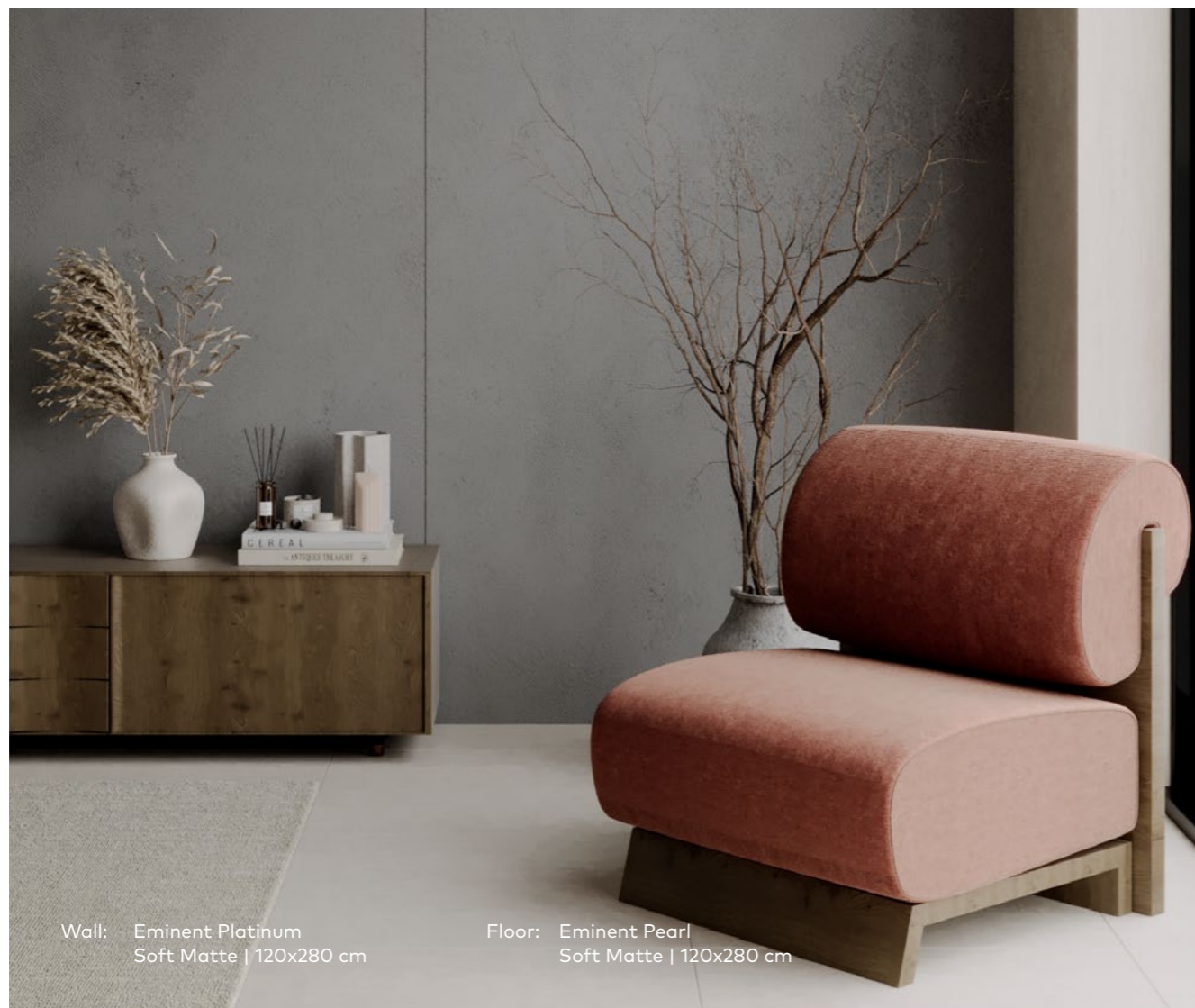
Let's take a closer look at Eminent. This masterpiece combines the raw solidity of cement with the tactile elegance of interwoven threads where the passage of time has softly marked a heritage. Its industrial appearance is layered with a warm touch and gentle look. Through the interaction between delicacy and permanence, Eminent separates itself from conventional concrete designs and proves its potential via its five fantastic colors to match both contemporary and classic compositions.



Wall: Eminent Platinum  
Soft Matte | 120x280 cm

Floor: Microcement Milk  
Soft Matte | 120x280 cm

Eminent



Wall: Eminent Platinum  
Soft Matte | 120x280 cm

Floor: Eminent Pearl  
Soft Matte | 120x280 cm



**PMA Chemical  
JOINT BAND**  
Color Suggestion



Size	Thickness	KG/Pallet	SQM Box	Pieces Box	KG/Box	Box/Pallet	SQM Pallet
120x280 cm	9.5 mm	2,730	3.36	-	72	36	120.96

Product details, including thickness and shade, may vary. For more information, please contact our sales department.



## Terrazzo

In a whisper of artistry, a new design emerges from scattered fragments of time. This design brings the memory of heritage stone mixed with various minerals to life. Each of the four Terrazzo tonalities is meticulously set within a field of subtle texture, resulting in a piece that feels both rooted in tradition and distinctly modern. This creation provides a unique and poetic language for design.



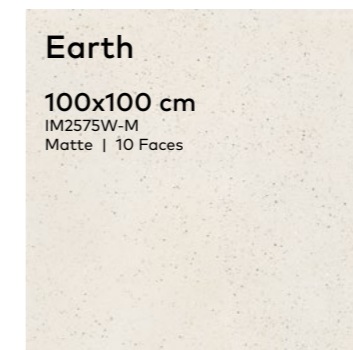
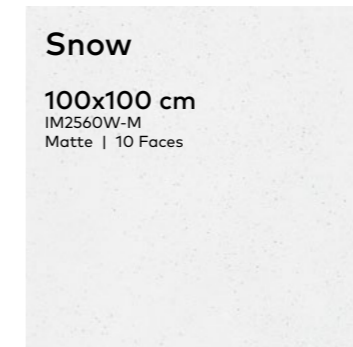
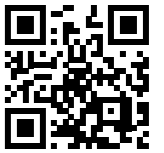
Floor: Terrazzo Chrome  
Matte | 100x100 cm



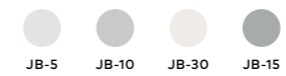


Floor: Terrazzo Earth  
Matte | 100x100 cm

# Terrazzo



**PMA Chemical  
JOINT BAND**  
Color Suggestion



Size	Thickness	KG/Pallet	SQM Box	Pieces Box	KG/Box	Box/Pallet	SQM Pallet
100x100 cm	9.5 mm	2,217	2.00	2	46	48	96.00

Product details, including thickness and shade, may vary. For more information, please contact our sales department.



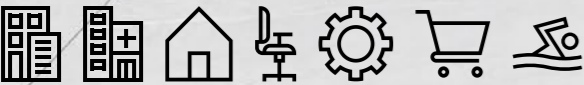
# A Resounding Legacy in Iran's ceramic Expanse

In Iran's ceramic domain, PMA | IMPERIO emerges as a beacon of unmatched excellence. With an unparalleled track record in both national and private endeavors, we've adorned a staggering 10 million square meters across 2,500 architectural marvels. In facades alone, our signature graces another 4 million square meters across 1100 landmarks. Beyond numbers, our collaborative journey with 8400+ industry maestros underscore our commitment. For those in quest of ceramic perfection, PMA | IMPERIO is the destination.

**PMA**  
collections



# PMA | IMPERIO's Precision Craftsmanship & Cutting Services Beyond Compare



## Usage

PMA | IMPERIO's ceramic tapestry is not just vast but resplendent in its diversity, showcasing our mastery. Whether it's the commercial core, rejuvenated office spaces, therapeutic hospitals, secure banks, luxurious hotels, or recreational arenas – our footprint is ubiquitous, echoing excellence. At PMA | IMPERIO, we don't just shape projects; we create experiences, solidifying our position as the ceramic connoisseur.

## Any Shape

Craftsmanship at PMA | IMPERIO transcends creation. With our avant-garde cutting services, we promise impeccable precision, translating every architectural vision into tangible reality. At PMA | IMPERIO, perfection is the norm.



# Design Alcove

A Confluence of  
Global Aesthetics and  
Indigenous Artistry

PMA | IMPERIO's Design Studio is a sanctuary where global trends harmonize with indigenous creativity. Home to passionate virtuosos, we ensure each creation is an epitome of timeless elegance and modern finesse. At PMA | IMPERIO's Design Studio, the future of ceramics is produced today.



## Marble Effect

Timeless Elegance, Reinvented

### 02 \_\_\_\_\_

Inspired by the grandeur of natural stone, the Marble Collection captures the intricate beauty and luxurious depth of classic marbles reimagined through cutting-edge ceramic innovation. With a refined palette and meticulous veining, each surface tells a story of sophistication and enduring style.

Whether used in modern interiors or timeless architectural spaces, this collection delivers the prestige of marble with the practicality of high-performance porcelain. Ideal for walls and floors, it offers seamless harmony between nature's legacy and contemporary living.



## Sovereign Cream

Sovereign Cream owes its elegance to the Pergamon Marble features, originating from Italy. The soft background that exudes purity and depth, makes Sovereign Cream an ideal choice for creating light and airy spaces. The subtle shades, sometimes referred to as honey tones, appear delicately within the texture, adding warmth to the overall design while white veins spreading over the background reveal the hidden grace in the layers of the design.





Floor: Sovereign Cream  
Polished | 120x280 cm

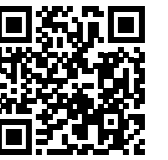


Floor: Sovereign Cream  
Polished | 60x120 cm





# Sovereign Cream



**PMA Chemical  
JOINT BAND**  
Color Suggestion



Size	Thickness	KG/Pallet	SQM Box	Pieces Box	KG/Box	Box/Pallet	SQM Pallet
120x300 cm	9.5 mm	2,950	3.6	-	82	36	129.6
120x280 cm	9.5 mm	2,730	3.36	-	72	36	120.96
120x120 cm	9.5 mm	1,700	1.44	-	33	50	72.00
100x100 cm	9.5 mm	2,217	2.00	2	46	48	96.00
60x120 cm	11.5 mm	2,250	1.44	2	38	60	86.40

Product details, including thickness and shade, may vary. For more information, please contact our sales department.

Floor: Sovereign Cream  
Polished | 60x120 cm



Floor: Mont Blanc  
Polished | 120x280 cm

Counter &  
Backsplash: Mont Blanc  
Polished



## Mont Blanc

Mont Blanc is a timeless and elegant design, a study in graceful simplicity that elevates any space with a touch of modern architecture. In this design, the canvas of pure white marble is graced with a dance of delicate veins. These winding veins, like whispers of an ancient story, form an aesthetic composition of Brazilian quartzite. The light sparse background and the flow of the veins make Mont Blanc even more remarkable with either polished or matt finish.



Floor: Mont Blanc  
Polished | 120x280 cm

Counter &  
Backsplash: Mont Blanc  
Polished



Wall: Mont Blanc  
Polished | Book Match

Floor: Level Light Grey  
Soft Matte | 120x280 cm





Wall: Mont Blanc  
Polished | Book Match

Floor: Level Light Grey  
Soft Matte | 120x280 cm



60x120 cm  
FGPB-R5225  
Polished | 9 Faces  
FGM-R5225  
Matte | 9 Faces



Available also in size 120x300 cm  
FGPB-P5230 | Polished | Book Match

**PMA Chemical  
JOINT BAND**  
Color Suggestion



Size	Thickness	KG/Pallet	SQM Box	Pieces Box	KG/Box	Box/Pallet	SQM Pallet
120x300 cm	9.5 mm	2,950	3.6	-	82	36	129.6
120x280 cm	9.5 mm	2,730	3.36	-	72	36	120.96
60x120 cm	11.5 mm	2,250	1.44	2	38	60	86.40

Product details, including thickness and shade, may vary. For more information, please contact our sales department.



# Soaring with PMA | IMPERIO

## The Pinnacle of Porcelain Facades in Iran

When it comes to pioneering porcelain facades, PMA | IMPERIO doesn't merely lead – they redefine excellence, soaring above all. As Iran's foremost trailblazer in ceramic facades, PMA | IMPERIO has transformed architectural dreams into tactile realities. Boasting an illustrious legacy of 4 million square meters of porcelain ceramics across 1100 iconic facade endeavors, PMA | IMPERIO is not just about shielding buildings but sculpting skylines. Embark on a journey with PMA | IMPERIO – where innovations take wing.



## Cement Effect

Urban Simplicity, Elevated

### 02 \_\_\_\_\_

Inspired by the honest texture of cast concrete, the Cement Collection embraces industrial minimalism with an architectural edge. Its matte surfaces and soft tonal shifts reflect the soul of the modern cityscape.

Ideal for contemporary interiors and commercial spaces alike, it offers understated sophistication and resilient performance bringing urban spirit into refined environments.





## Microcement

Modern simplicity can be achieved through harnessing natural elements. Microcement creates a singular, integrated and homogenous surface which can be seamlessly woven into any stylish architectural design with its diverse six-color palette. Distinguished Elarca punch which evokes elegance in an arced structure is a unique decorative and creative texture that generates a tactile and visual depth.

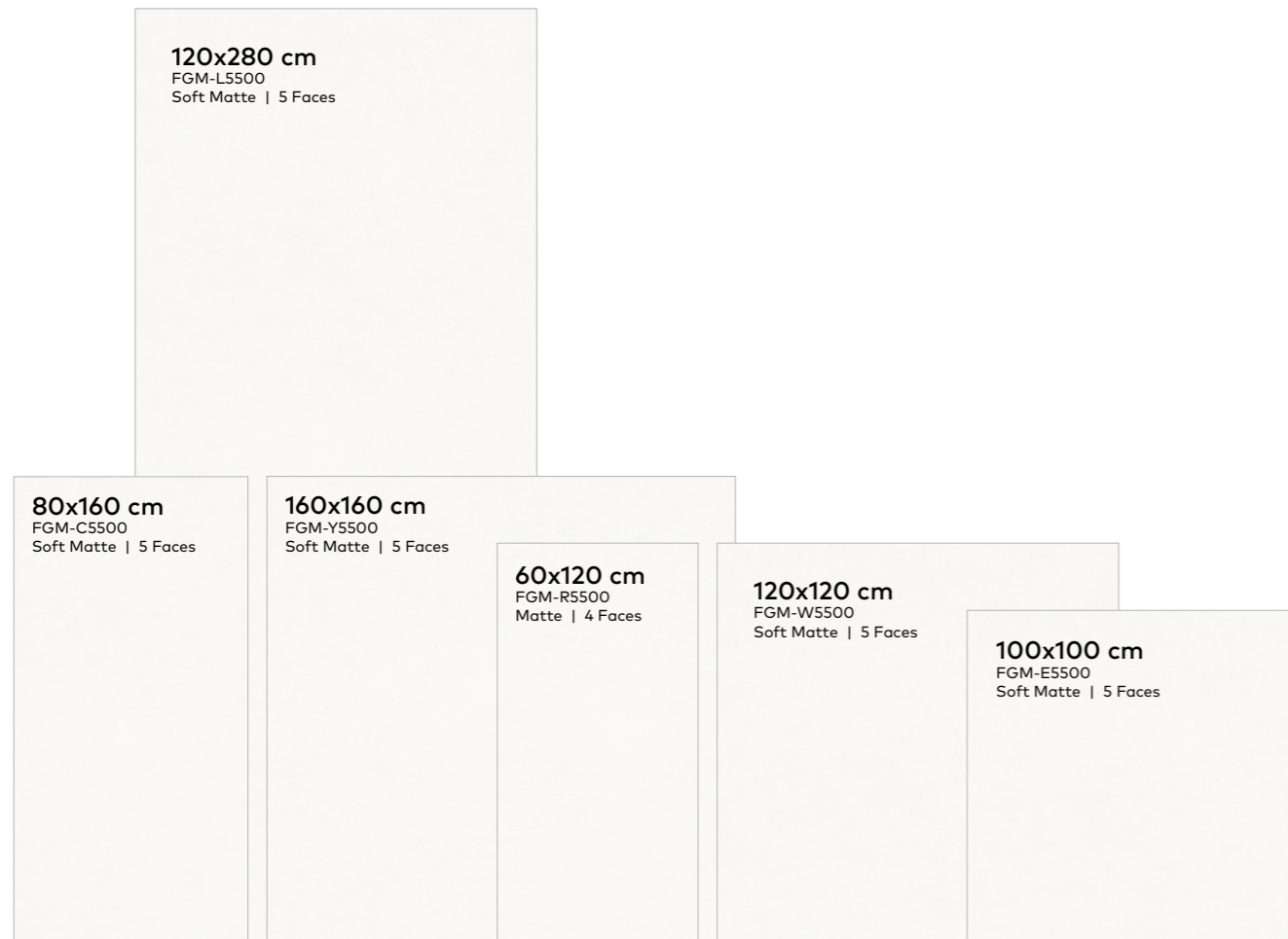


Floor: Microcement Milk  
Soft Matte | 120x280 cm

Counter & Backsplash: Microcement Milk  
Soft Matte | 120x280 cm



# Microcement Milk



**PMA Chemical  
JOINT BAND**  
Color Suggestion



JB-5

Size	Thickness	KG/Pallet	SQM Box	Pieces Box	KG/Box	Box/Pallet	SQM Pallet
120x280 cm	9.5 mm	2,730	3.36	-	72	36	120.96
120x120 cm	9.5 mm	1,700	1.44	-	33	50	72.00
80x160 cm	9.5 mm	1,370	1.28	-	27	50	64.00
100x100 cm	9.5 mm	2,217	2.00	2	46	48	96.00
60x120 cm	11.5 mm	2,292	1.44	2	38	60	86.40

Product details, including thickness and shade, may vary. For more information, please contact our sales department.

# Microcement Latte



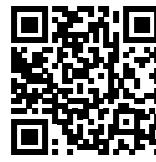
**PMA Chemical  
JOINT BAND**  
Color Suggestion



JB-36

Size	Thickness	KG/Pallet	SQM Box	Pieces Box	KG/Box	Box/Pallet	SQM Pallet
120x280 cm	9.5 mm	2,730	3.36	-	72	36	120.96
120x120 cm	9.5 mm	1,700	1.44	-	33	50	72.00
80x160 cm	9.5 mm	1,370	1.28	-	27	50	64.00
100x100 cm	9.5 mm	2,217	2.00	2	46	48	96.00
60x120 cm	11.5 mm	2,292	1.44	2	38	60	86.40

Product details, including thickness and shade, may vary. For more information, please contact our sales department.



# Microcement Toffee



**PMA Chemical  
JOINT BAND**  
Color Suggestion



JB-62

Size	Thickness	KG/Pallet	SQM Box	Pieces Box	KG/Box	Box/Pallet	SQM Pallet
120x280 cm	9.5 mm	2,730	3.36	-	72	36	120.96
120x120 cm	9.5 mm	1,700	1.44	-	33	50	72.00
80x160 cm	9.5 mm	1,370	1.28	-	27	50	64.00
100x100 cm	9.5 mm	2,217	2.00	2	46	48	96.00
60x120 cm	11.5 mm	2,292	1.44	2	38	60	86.40

Product details, including thickness and shade, may vary. For more information, please contact our sales department.

# Microcement Seal



**PMA Chemical  
JOINT BAND**  
Color Suggestion



JB-10

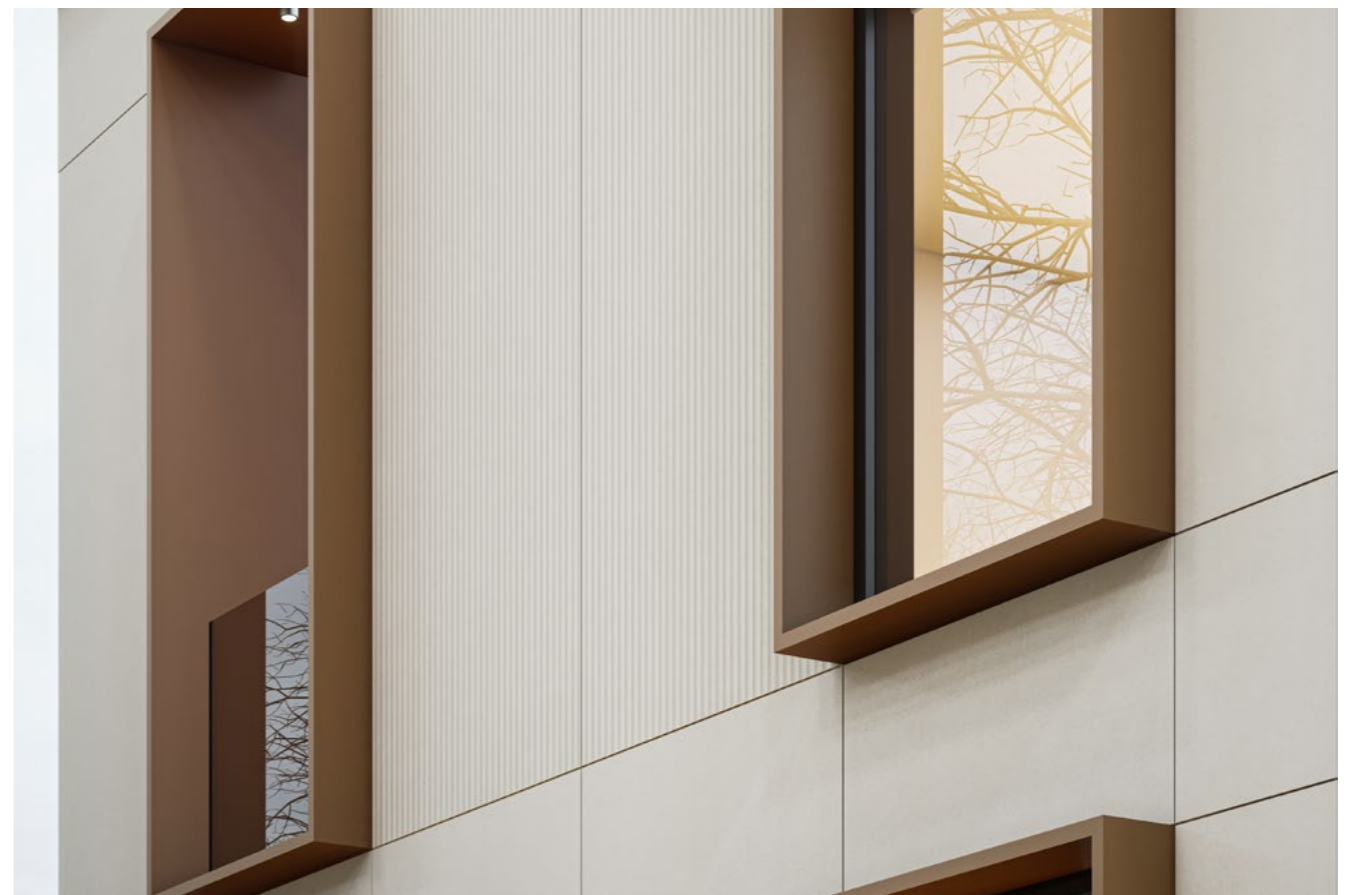
Size	Thickness	KG/Pallet	SQM Box	Pieces Box	KG/Box	Box/Pallet	SQM Pallet
120x280 cm	9.5 mm	2,730	3.36	-	72	36	120.96
120x120 cm	9.5 mm	1,700	1.44	-	33	50	72.00
80x160 cm	9.5 mm	1,370	1.28	-	27	50	64.00
100x100 cm	9.5 mm	2,217	2.00	2	46	48	96.00
60x120 cm	11.5 mm	2,292	1.44	2	38	60	86.40

Product details, including thickness and shade, may vary. For more information, please contact our sales department.



Facade: Microcement Milk  
Relief | 60x120 cm

Microcement Milk  
Matte | 60x120 cm



# Microcement



Wall: Microcement Toffee  
Reliefe | 60x120 cm



**PMA Chemical  
JOINT BAND**  
Color Suggestion



Size	Thickness	KG/Pallet	SQM Box	Pieces Box	KG/Box	Box/Pallet	SQM Pallet
60x120 cm	11.5 mm	2,250	1.44	2	38	60	86.40

Product details, including thickness and shade, may vary. For more information, please contact our sales department.



Wall: Microcement Milk Elarca  
Relief | 120x280 cm

Floor: Microcement Latte  
Soft Matte | 120x280 cm





Wall: Microcement Milk Elarca  
Relief | 120x280 cm

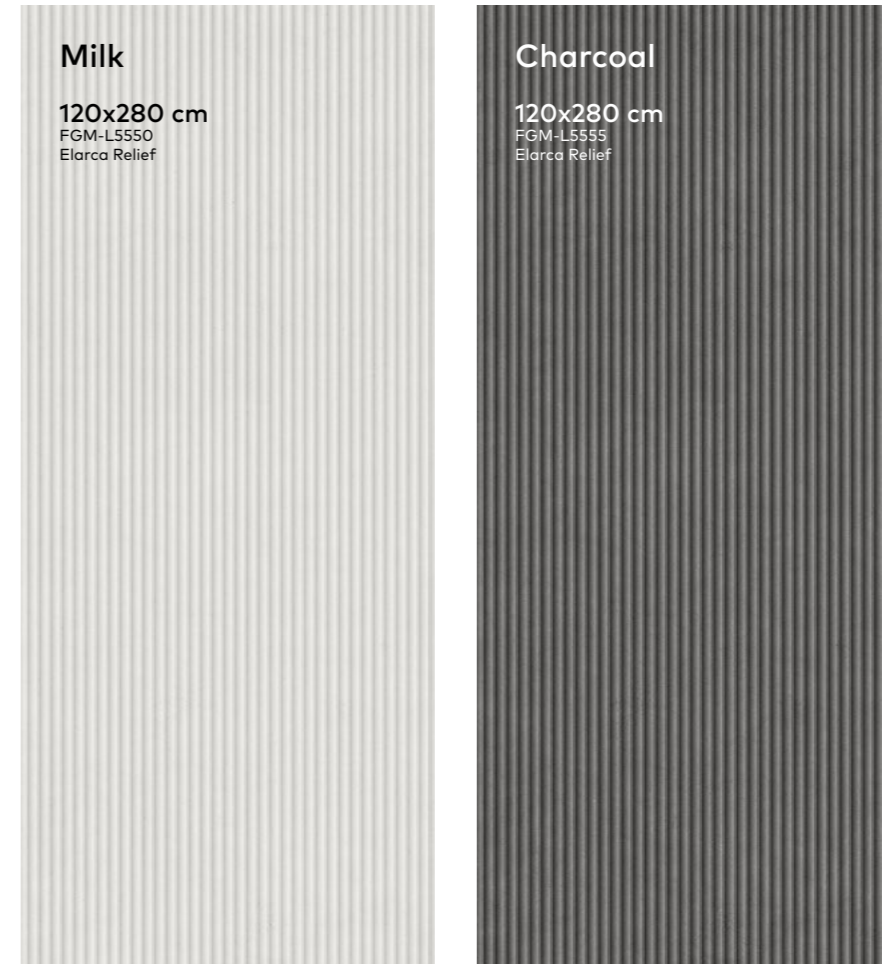
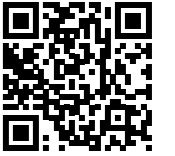
Floor: Microcement Latte  
Soft Matte | 120x280 cm



Wall: Microcement Charcoal Elarca Relief | 120x280 cm

Floor: Microcement Latte Soft Matte | 120x280 cm

# Microcement



**Milk**  
120x280 cm  
FGM-L5550  
Elarca Relief

**Charcoal**  
120x280 cm  
FGM-L5555  
Elarca Relief

**PMA Chemical  
JOINT BAND**  
Color Suggestion



Size	Thickness	KG/Pallet	SQM Box	Pieces Box	KG/Box	Box/Pallet	SQM Pallet
120x280 cm	9.5 mm	2,730	3.36	-	72	36	120.96

Product details, including thickness and shade, may vary. For more information, please contact our sales department.



# Elevating Standards, Crafting Excellence

In an epoch where global standards benchmark quality, PMA | IMPERIO endeavors to transcend. Anchored by our avant-garde quality control lab, each ceramic piece evolves into a paragon of perfection. Our alliance with the standards organization amplifies our commitment. At PMA | IMPERIO, we don't chase standards; we generate them.

## STANDARDS



European standard that defines terms and specifications of ceramic tiles



ISO 9001 is the international standard for quality management system



Institute of Standards and Industrial Research of Iran  
8906997838

## TEST REPORTS



CE marking is an administrative marking that indicates conformity with health, safety, and environmental protection standards for products sold within the European Economic Area.



Seramik Araştırma Merkezi Turkish Ceramic Research Center Standard testing laboratory



Ministry of Road & Urban Development Road, Housing & Urban Development Research Center



Laboratorio Cerámico Sebastián Carpi was the first national laboratory tests to be created for the evaluation of the quality of ceramic tiles.



Modena Centro Prove s.r.l. è un laboratorio di prova che opera nel settore delle analisi chimiche e dei servizi tecnologici.



## Stone Effect

Raw Beauty, Refined

04 \_\_\_\_\_

Echoing the enduring strength and organic textures of quarried stone, the Stone Collection blends rugged character with contemporary elegance. Its surfaces evoke landscapes shaped by time, offering a grounded, elemental aesthetic.

Perfect for spaces that seek a balance between authenticity and design sophistication, this collection celebrates nature's raw power refined for modern architecture and interior design.



## Romano

Romano reveals the aesthetics of travertine which is a trendy design. The delicate signature streaks and tonal gradients, evoke a visual depth. Romano in cream and bone creates a balance between nature's simplicity and modern possibilities.



Wall: Romano Bone  
Natural | 120x280 cm

Floor: Romano Bone  
Natural | 120x280 cm



Wall: Romano Bone  
Natural | 120x280 cm

Floor: Romano Bone  
Natural | 120x280 cm





Wall: Romano Cream  
Natural | 120x280 cm

Floor: Romano Cream  
Natural | 120x280 cm

Romano



**Bone**

120x280 cm  
FGM-L5530  
Natural | 5 Faces

**Cream**

120x280 cm  
FGM-L5535  
Natural | 5 Faces

**PMA Chemical  
JOINT BAND**  
Color Suggestion



Size	Thickness	KG/Pallet	SQM Box	Pieces Box	KG/Box	Box/Pallet	SQM Pallet
120x280 cm	9.5 mm	2,730	3.36	-	72	36	120.96

Product details, including thickness and shade, may vary. For more information, please contact our sales department.



Floor: Riven Slate Iron  
Matte | 60x120 cm

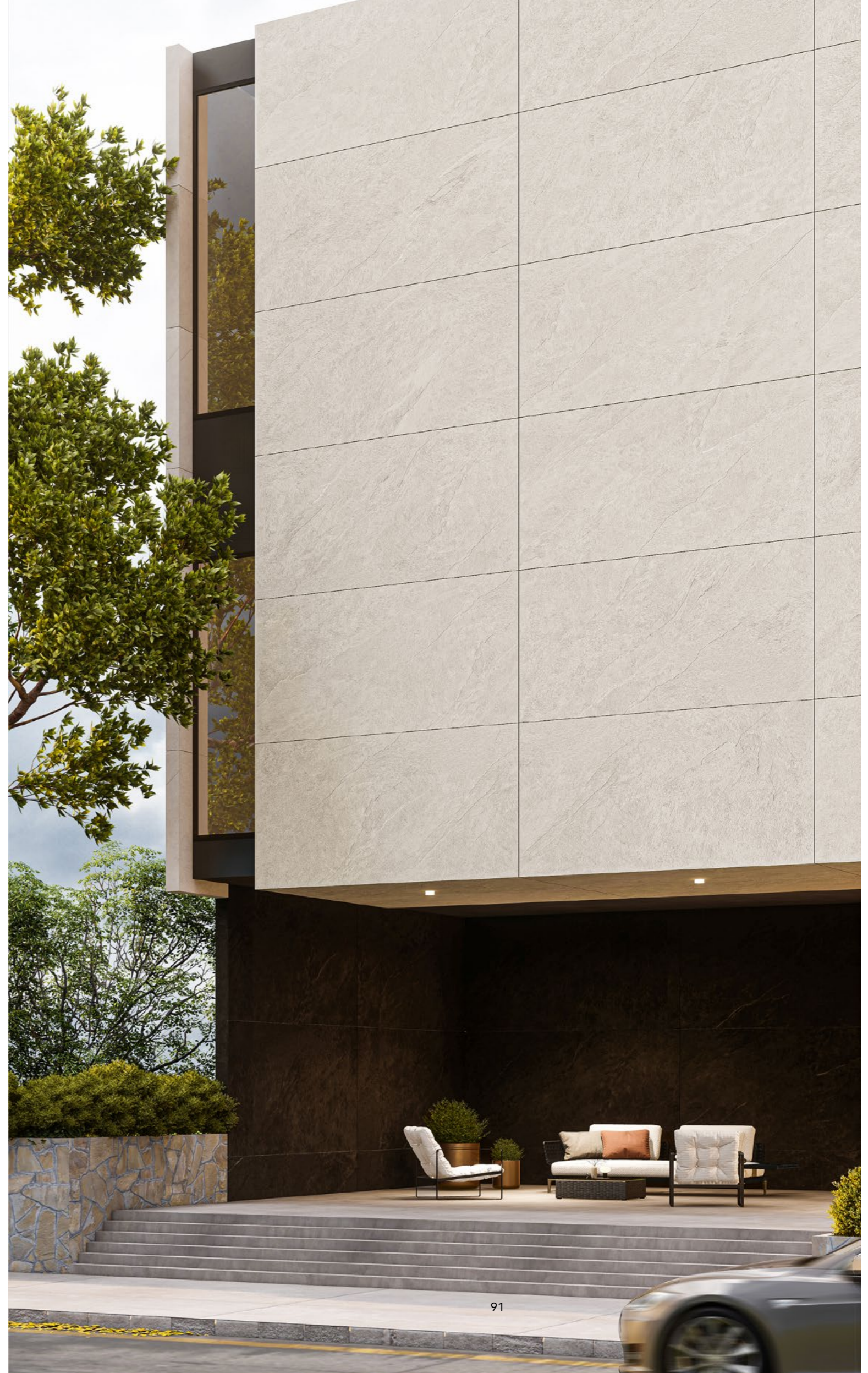


## Riven Slate

Riven Slate is a mesmerizing creation inspired by volcanic rocks found in the east. It beautifully combines the elements of earth and water, as the magma of volcanoes meets cold waters to form captivating rock formations. This unique design is widely favored in contemporary and modern architecture, particularly for large surfaces. With its sophisticated blend of intense greys and neutral tones, Riven Slate effortlessly infuses any space with a minimal and modern style. The product's relief surface further enhances its appeal, adding depth and texture to its timeless charm and layered structure.



Floor: Riven Slate Iron  
Matte | 60x120 cm





Riven  
Slate



<p><b>Sand</b></p> <p>60x120 cm FGM-R5470 Relief   10 Faces</p>	<p><b>Silver</b></p> <p>60x120 cm FGM-R5475 Relief   10 Faces</p>	<p><b>Iron</b></p> <p>60x120 cm FGM-R5480 Relief   10 Faces</p>	<p><b>Graphite</b></p> <p>60x120 cm FGM-R5485 Relief   10 Faces</p>	<p><b>Mocha</b></p> <p>60x120 cm FGM-R5490 Relief   10 Faces</p>
---	---	---	---	--

**PMA Chemical  
JOINT BAND**  
Color Suggestion



Size	Thickness	KG/Pallet	SQM Box	Pieces Box	KG/Box	Box/Pallet	SQM Pallet
60x120 cm	11.5 mm	2,250	1.44	2	38	60	86.40

Product details, including thickness and shade, may vary. For more information, please contact our sales department.

Facade: Riven Slate Sand Matte | 60x120 cm      Riven Slate Mocha Matte | 60x120 cm

# Crafting Iconic Facades & Beyond

In the architectural sonnet, a facade is the chorus. PMA | IMPERIO ceramics are not just crafted for beauty but curated for an everlasting imprint. From bustling commercial hubs to serene hospitals, our ceramics are a symphony of design and durability.



**Technical  
Information**

# Technical Characteristics

CHARACTERISTICS	Annex G Group Bla		Test Method	PMA   IMPERIO Test Result
	Requirments for normal size n >15cm			
<b>DIMENSIONS AND SURFACE QUALITY</b>				
Length and width (cm )	±0.6%	max ±2mm	EN ISO 10545-2	Affirmative
Thickness	5%	max ±0.5mm	EN ISO 10545-2	Affirmative
Rectangularity	±0.5%	max ±2mm	EN ISO 10545-2	Affirmative
Straightness of sides	±0.5%	max ±1.5mm	EN ISO 10545-2	Affirmative
Surface flatness	±0.5%	max ±2mm	EN ISO 10545-2	Affirmative
<b>SURFACE FLATNESS</b>				
a) Center curvature ,related to diagonal calculated from the work sizes	0.50%	max ±2mm	EN ISO 10545-2	Affirmative
b) Edge curvature, related to the corresponding work size	±0.5%	max ±2mm	EN ISO 10545-2	Affirmative
c) Warpage, related to diagonal calculated from the work size	±0.5%	max ±2mm	EN ISO 10545-2	Affirmative
<b>PHYSICAL PROPERTIES</b>				
Water absorption (in %by mass )	E ≤%0.5 Individual Maximum %0.6		EN ISO 3-10545	Affirmative
BREAKING STRENGTH (N) for Thickness ≥7.5mm	Not Less Than 1300N		EN ISO 4-10545	Affirmative
Flexural tensile strength or Modulus of rupture (N /mm²)	"Minimum 35N /mm² Individual Minimum 32N /mm²"			Affirmative

CHARACTERISTICS	Annex G Group Bla		Test Method	PMA   IMPERIO Test Result
	Requirments for normal size n >15cm			
<b>PHYSICAL PROPERTIES</b>				
Impact resistance ,as: Coefficient of restitution (COR )	Declared Value		EN ISO 5-10545	Affirmative
Resistance to deep abrasion of unglazed tiles: Removed value (mm³)	Maximum 175 mm³		EN ISO 6-10545	Affirmative
Resistance to surface abrasion of glazed tiles intended for use on floors	Abrasion class and cycles passed		EN ISO 7-10545	Affirmative
Coefficient of linear thermal expansion	Declared Value		EN ISO 8-10545	Affirmative
Resistance to thermal shock	Pass according to EN ISO 1-10545		EN ISO 9-10545	Affirmative
Frost resistance	Pass according to EN ISO 1-10545		EN ISO 12-10545	Affirmative
<b>CHEMICAL PROPERTIES</b>				
Resistance to the low concentration of acids & alkanes	Declared Value		EN ISO 13-10545	Affirmative
Resistance to the high concentration of acids & alkanes	Declared Value			Affirmative
Resistance to household chemicals & swimming pool salts	Minimum Class B			Affirmative
Resistance to staining (glazed tiles)	Minimum Class 3		EN ISO 14-10545	Affirmative
Resistance to staining (Unglazed tiles)	Declared value		EN ISO 14-10545	Affirmative

# Technical Characteristics

## WATER ABSORPTION

ISO 10545-3

The water absorption of IMPERIO slabs is minimized thanks to production and quality control standards of an extremely high level, which guarantees compactness and a reduced level of porosity. The value given in the tables of technical characteristics refers to the percentage of water absorbed with respect to the mass.

## BENDING RESISTANCE

ISO 10545-4

The value expressed allows an analysis of the ability of the slabs to withstand static and dynamic stress in the test conditions.

## ABRASION RESISTANCE

ISO 10545-6

The test is performed on unglazed (UGL) surfaces in order to determine the quantity of material that is removed following the action of an abrasive disc (150 revs). The IMPERIO slabs prove to be more resistant the less material is removed by the disc.

## FROST RESISTANCE

ISO 10545-12

Outdoor applications are particularly prone to deterioration due to frost, because in the event that any water absorbed turns into ice, this can lead to the tile breaking. The IMPERIO slabs are not damaged by frost in any way thanks to their compactness and low porosity.

## RESISTANCE TO CHEMICAL AGGRESSION

ISO 10545-13

The laboratory analysis is able to determine the resistance of glazed (GL) and unglazed (UGL) surfaces to chemical aggression by using acids and bases with a high concentration in line with the following classification: LA, HA, A: no visible effect.

## SLIPPERINESS

DIN 51130-1

In this test, a person is asked to stand on a flat surface covered with tiles and sprinkled with oil. This surface is then tilted until the person, wearing specific footwear, starts to slip. The following classification is established by the angle of inclination of the tiled surface at the moment the person starts to slip:

up to <6° unclassified  
6°< to 10° R9

## STAIN RESISTANCE

ISO 10545-14

Three different elements (oil, iodine solution, and green chrome solution) are applied to and left on the tiles for 24 hours, after which they are then cleaned:

» Class E 5

The stain is removed with hot running water for 5 minutes.

» Class E 4

The stain is removed using a weak neutral detergent and a non-abrasive sponge.

» Class E 3

The stain is removed using a basic detergent containing an abrasive agent and

a rotating brush with hard bristles.

» Class E 2

The stain is removed using a suitable solvent, left on the stain for 24 hours.

» Class E1

The stain cannot be removed.

## CHARACTERISTICS OF THE IMPERIO SLABS

The IMPERIO slabs are produced only with natural, mineral raw materials. Research on the product has made it possible to obtain an effect that is extremely close to the natural material, with the advantage that the typical defects and blemishes in the original product found in nature can be removed using technology.

» Basic formats and special trim can be supplied in autonomous shades.

Any minor variations in size fall within the standard tolerance values;

» Any minor dots add to the natural feel of the material;

» Any second choice or discontinued products are sold on an "as seen" basis and may not be returned;

» The use of IMPERIO slabs with non-rectified edges is allowed only after the de-tensioning of the slab by removing any excess from the outer edges, as per the specifications in the technical manual.

## DOCUMENTATION

The engineered surface reserves the right to make changes to the products illustrated in this catalog for production requirements or with the aim of improving the technical/aesthetic quality. The samples are purely indicative. The packaging and weight information is shown may vary for production requirements. To avoid any problems, we recommend contacting the sales department at the time of placing an order.

## USE AND MAINTENANCE

### SUGGESTIONS FOR CORRECT FITTING AND CLEANING

Although the slabs are mainly intended for furnishing, PMA | IMPERIO slabs may also be fitted in the traditional way as flooring and wall coverings to create spaces with a "total look". The following specifications refer to slabs fitted as flooring and wall coverings. With regard to the gluing of the slabs on furnishing elements, we recommend you consult the PMA | IMPERIO technical manual.

### FITTING

When you receive the material ordered and in any case before fitting, it is important to check carefully the characteristics of the material (compliance with size, shade, and quality). No complaints will be accepted for any materials that have already been fitted if the defects were visible prior to fitting. To obtain the best aesthetic results, we recommend mixing the graphics accurately to avoid repeating patterns and to obtain the best possible results in terms of layout and color. The slabs can be fitted using specific high-performance adhesives for porcelain stoneware, adhesives in category C2 or above. We recommend applying the adhesive on both sides to prevent any breakages of the material once fitted. Please remember that at the time of fitting, the substrate must be stable, dry, and properly prepared, not frosted, and not too hot and that it is necessary in any case to follow the instructions provided by the manufacturers of the materials for the specific substrates and adhesives used. Cement-based adhesives must be applied at room temperature, in general between 5°C and 30/35°C. It is hereby understood that we recommend observing the technical times indicated by the manufacturers of the adhesives used. The most suitable adhesives for fitting the PMA | IMPERIO slabs are listed in the European Standard currently in force: EN12004. When fitting the material, avoid using pencils (graphite) or permanent markers to make marks on the surface, particularly on polished products. The PMA | IMPERIO slabs can be shaped and cut using purpose-built diamond discs and equipment for porcelain stoneware.

### JOINTS AND GROUTING

We strongly advise against fitting the slabs without joints. We also recommend a minimum joint of 3 mm (this type of fitting allows the grout to have a better grip on the sides of the slabs, greater absorption of any movements of the substrate, and consequently of the slabs themselves). In large, open spaces it is absolutely essential to position the expansion joints at regular intervals; in smaller rooms, on the other hand, it is sufficient to leave a slight space between the tiled surface and the walls around the room, adding a final touch with a skirting board or with the wall covering. Please refer in any case to the advice/suggestions of the planner, the works director, or the tile fitter to avoid problems of any sort. For the best possible results, we suggest using tone-on-tone grouting. It is important to remove any excess grouting immediately and accurately after application while still fresh, using a sponge and plenty of water. A few days after fitting, once the joints are completely dry, it is essential to thoroughly clean the tiled surface using buffered acids (see the after fitting instructions) in order to completely remove all cement-based residues.

### CLEANING "AFTER FITTING"

Properly cleaning the files after they have been fitted is crucial. If residues of grouting are not properly removed, this may leave marks that are difficult to remove later, due to a film of cement that can absorb any kind of dirt. It is essential to loosen and eliminate these residues completely using buffered acids diluted in water (read the instructions for use on the packages of the products used), soon after fitting, and to thoroughly rinse any residues from the fitted surface in order to prevent any damage to the material. It is preferable to try cleaning a small part of the surface first; if the results are good, the entire surface can then be cleaned. After this, the floor must then be cleaned using a basic or alkaline detergent. These must be degreasing because the surface treatment might help to trap dirt. For Polished slabs with a marble effect, PMA | IMPERIO recommends taking special care when cleaning the surface using buffered acids, as the surface may be damaged if the acid is not removed quickly. For polished surfaces, the use of non-abrasive cleaning equipment is necessary to prevent the surface from losing its shine or becoming scratched.

### ROUTINE CLEANING

For routine cleaning of the PMA | IMPERIO slabs, we strongly advise against the use of waxes, greasy soaps, fillers and various treatments (water repellent) treatments. In order to prevent any shiny patinas from forming on the slabs, PMA | IMPERIO would like to point out that hydrofluoric acid (HF) and its derivatives cause irrevocable damage to its products. For routine cleaning operations, PMA | IMPERIO recommends the use of bleach and ammonia, appropriately diluted in water; for the Polished finish, it suggests drying the floor after cleaning to avoid any marks.

### EXTRAORDINARY CLEANING

In the case of particularly stubborn stains, we recommend the use of specific detergents, which are indicated in greater detail in the table entitled "cleaning products". Furthermore, it should not be forgotten that it is easier to remove any stain when still fresh. It is always important to test the detergents on a small area before applying them to the entire surface, particularly on Polished surfaces.

### RAISED FLOORINGS

In the case of raised floorings, it is not possible to use a large quantity of water; we, therefore, recommend using a floor cloth that has been properly wrung. Routine cleaning must be carried out using purpose made floor cloths, lukewarm water, and detergent, reducing the amount of water used. Stains can still be removed using concentrated products directly on the stains.

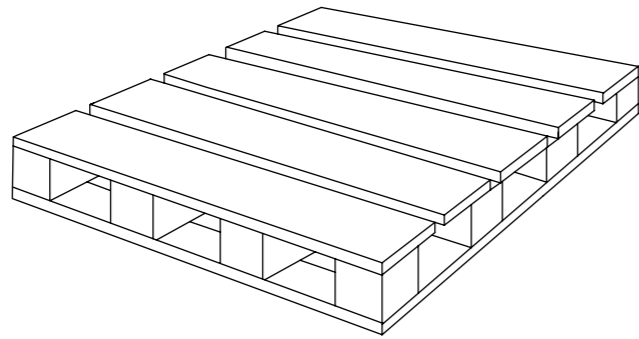
# Technical Details

Table -2 Characteristic of Ceramic Tiles Required for Different Applications

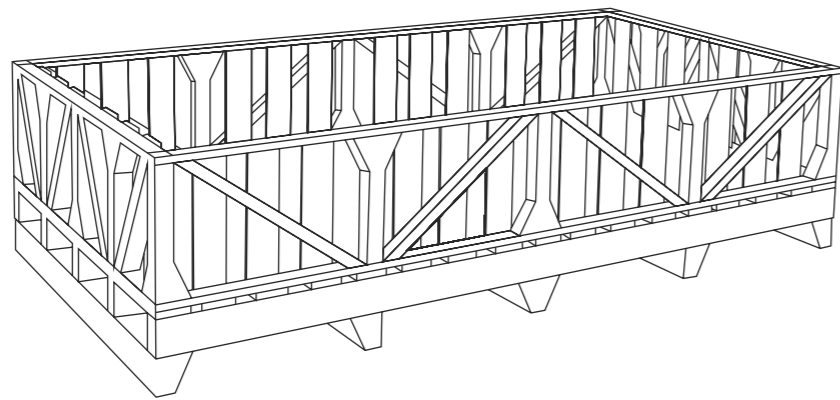
CHARACTERISTICS <sup>a)</sup>		FLOORINGS		WALLS		TEST METHOD
A)	DIMENSIONS AND SURFACE QUALITY	INTERIOR	EXTERIOR	INTERIOR	EXTERIOR	REFERENCE
A.1	Length and Width (cm)	X	X	X	X	EN ISO 10545-2
A.2	Thickness	X	X	X	X	EN ISO 10545-2
A.3	Straightness of Sides (i.e. Facial Sides) <sup>b)</sup>	X	X	X	X	EN ISO 10545-2
A.4	Rectangularity <sup>b)</sup>	X	X	X	X	EN ISO 10545-2
A.5	Surface Flatness	X	X	X	X	EN ISO 10545-2
A.6	Surface Quality	X	X	X	X	EN ISO 10545-2
B)	PHYSICAL PROPERTIES	INTERIOR	EXTERIOR	INTERIOR	EXTERIOR	REFERENCE
B.1	Water Absorption	X	X	X	X	EN ISO 10545-3
B.2	Breaking Strength <sup>d)</sup>	X	X	X	X	EN ISO 10545-4
B.3	Flexural Tensile Strength <sup>d)</sup> or Modules of Rupture <sup>d)</sup>	X	X	X	X	EN ISO 10545-4
B.4 a	Resistance to Deep Abrasion -Unglazed Tiles <sup>d)</sup>	X	X			EN ISO 10545-6
B.4 b	Resistance to Surface Abrasion -Glazed Tiles <sup>d)</sup>	X	X			EN ISO 10545-7
B.5	Linear Thermal Expansion <sup>d)</sup>	X	X	X	X	EN ISO 10545-8
B.6	Resistance to Thermal Shock <sup>d)</sup>	X	X	X	X	EN ISO 10545-9
B.7	Resistance to Cracking <sup>d)</sup>	X	X	X	X	EN ISO 10545-11
B.8	Freeze -Thaw Resistance <sup>h)</sup>		X		X	EN ISO 1015-12
B.9	Slipperiness	X	X			FprCEN /TS 16165:2011 <sup>p)</sup>

CHARACTERISTICS <sup>a)</sup>		FLOORINGS		WALLS		TEST METHOD
B.10 a	Bond Strength / Adhesion <sup>k)</sup> - Cementitious Adhesives			X	X	EN 12004:2007,4.1
B.10 b	Bond Strength / Adhesion <sup>k)</sup> - Dispersion Adhesives			X	X	EN 12004:2007,4.2
B.10 c	Bond Strength / Adhesion <sup>k)</sup> - Reaction Resin Adhesives			X	X	EN 12004:2007,4.3
B.10 d	Bond Strength / Adhesion <sup>k)</sup> - Mortar			X	X	EN ISO 10545-12
B.11	Moisture Expansion <sup>l)</sup>	X	X	X	X	EN ISO 10545-10
B.12	Small Color Differences <sup>m)</sup>	X	X	X	X	EN ISO 10545-16
B.13	Impact Resistance <sup>n)</sup>	X	X			EN ISO 10545-5
B.14	Reaction to Fire <sup>o)</sup>	X		X	X	WT
B.15	Tactility <sup>p)</sup>	X	X			CEN TS 15209)
C)	CHEMICAL PROPERTIES	INTERIOR	EXTERIOR	INTERIOR	EXTERIOR	REFERENCE
C.1 a	Resistance to Staining -Glazed Tiles <sup>q)</sup>	X	X	X	X	EN ISO 10545-14
C.1 b	Resistance to Staining -Unglazed Tiles <sup>q)</sup>	X	X	X	X	EN ISO 10545-14
C.2 a	Resistance to Acids and Alkalis of Low Concentration <sup>r)</sup>	X	X	X	X	EN ISO 10545-13
C.2 b	Resistance to Acids and Alkalis of High Concentration <sup>r)</sup>	X	X	X	X	EN ISO 10545-13
C.2 c	Resistance to Household Cleaning Agents and Swimming Pool Chemicals <sup>r)</sup>	X	X	X	X	EN ISO 10545-13
C.3 a	Release of Cadmium -Glazed Tiles <sup>s)</sup>	X	X	X	X	EN ISO 10545-15
C.3 b	Release of Lead -Glazed Tiles <sup>s)</sup>	X	X	X	X	EN ISO 10545-15
C.3 c	Release of Other Dangerous Substances <sup>s)</sup>	X	X	X	X	As Relevant

# Packing



Size (cm)	Thickness (mm)	Weight Pallet	Sqm Box	Pieces Box	Kg Box	Box Pallet	Sqm Pallet
60x120 Polished	11.5	2,292	1.44	2	38	60	86.40
60x120 Matte	11.5	2,250	1.44	2	38	60	86.40
20x120	11.5	2,021	0.96	4	26	84	80.64
60x60	20	1,242	0.72	2	31	40	28.80
100x100	9.5	2,208	2	2	46	48	96



Size (cm)	Thickness (mm)	Weight Pallet	Sqm Box	Pieces Box	Kg Box	Box Pallet	Sqm Pallet
80x160	9.5	1,370	1.28	-	27	50	64.00
120x120	9.5	1,700	1.44	-	33	50	72.00
120x240	9.5	2,354	2.88	-	62	36	103.68
120x280	9.5	2,730	3.36	-	72	36	120.96
120x300	9.5	2,950	3.60	-	82	36	129.60
160x320	9.5	2,600	5.12	-	110	22	112.64

Ceramic tiles shall be classified into groups according to two parameters: by their method of manufacture (also referred to "shaping") that is, extrusion (method A) or dry-pressing (method B), and by their water absorption level (see 3.9 and Table 1). The groups do not presuppose the usage of the products. The requirements for each product group shall be as given in Annexes A to L.

**Table 1 - Classification of ceramic tiles with respect to water absorption and shaping**

Shaping	Water Absorption ( $E_b$ )			
	Group I $E_b \leq 3\%$	Group II <sub>a</sub> $3\% < E_b \leq 6\%$	Group II <sub>b</sub> $6\% < E_b \leq 10\%$	Group III $E_b > 10\%$
Method A Extruded	Group AI $E_b \leq 0.5\%$ (see Annex L)	Group AI <sub>a-1</sub> <sup>a)</sup> (see Annex B)	Group AI <sub>b-1</sub> <sup>a)</sup> (see Annex D)	Group AIII (see Annex F)
	Group AI <sub>b</sub> $0.5\% < E_b \leq 3\%$ (see Annex A)	Group AI <sub>a-2</sub> <sup>a)</sup> (see Annex C)	Group AI <sub>b-2</sub> <sup>a)</sup> (see Annex E)	Group BIII <sub>b</sub> (see Annex K)
Method B Dry-pressed	Group BI <sub>a</sub> $E_b \leq 0.5\%$ (see Annex G)	Group BI <sub>b</sub> (see Annex I)	Group BI <sub>b</sub> (see Annex J)	
	Group BI <sub>b</sub> $0.5\% < E_b \leq 3\%$ (see Annex H)			

a) Groups AI and AI<sub>a</sub> are divided into two parts (parts 1 and 2) with different product specifications. Part 1 covers most of the tiles in the group; part 2 covers certain specific products, which are manufactured under different names (e.g. terre cuite in France and Belgium, cotton in Italy, and baldosin Catalan in Spain).

b) Group BIII covers glazed ceramic tiles only. There is no quantity of dry-pressed unglazed tiles produced with water absorption greater than 10% that is not covered by this product group.

- a Requirements for these characteristics are given in Annex A to L.
- b Not applicable for ceramic tiles having curved shapes.
- c For floorings only.
- d For walls only.
- e See N.2.2.
- f For ceramic tiles which intended use is subject to localized thermal shock
- g For glazed ceramic tiles only.
- h For ceramic tiles that are intended to be used where frost may apply.
- i For floorings on pedestrian circulation areas (where required are regulation).
- j Unless a different test method is required by national regulations in the market of the relevant Member State(s) for the intended use, in which case the test method and results shall be declared as given therein.
- k For walls when performing the test with actual ceramic tiles and suitable adhesive(s) or mortar only.
- l See N.2.3.
- m See N.2.6.
- n See N.2.1.
- o For ceramic tiles intended to be used for internal floorings and for internal and external walls only.
- p For tactile paving surface only i.e. when required for blind or vision impaired persons.
- q See N.2.5.
- r See N.2.4.
- s When relevant, see Notes 1 and 2 in ZA.1 for the release of other dangerous substances, if any.
- t For glazed ceramic tiles only, when intended to be used on worktops and on wall surfaces where food preparation takes place and food may be in direct contact with the glazed tile surface. As indicative limits, reference could be made to Direct 2005/31/CE.

NOTE 1 Characteristics given in this table in "plain" text are relevant to all intended uses, while those in "italics" are additionally relevant for the specific intended use(s) only.

NOTE 2 Characteristics, given in this table in "bold" text, are the mandated essential characteristics or the corresponding proxy characteristics (for CE marketing, see Annex ZA) and those in "normal" text, the voluntary characteristics (not for CE marketing)

## Requirements for Dry-pressed Ceramic Tiles With Low Water Absorption of GROUP BI<sub>a</sub> (E<sub>b</sub> ≤0.5%)

Requirements for Dimension and Surface Quality and for Physical and Chemical Properties of this Group of Ceramic Tiles Shall be in Accordance With Table G.1

Table G.1 - Requirements for Dry-pressed Ceramic Tiles with Low Water Absorption, GROUP BI<sub>a</sub> (E<sub>b</sub> ≤0.5%)

CHARACTERISTICS	Requirements for Nominal Size N			Test Method
	7 cm < N < 15 cm	N ≥ 15 cm		
	(mm)	%	(mm)	
<b>A) DIMENSIONS AND SURFACE QUALITY</b>				
A.1 LENGTH AND WIDTH				
The Work Size Shall be Chosen as Follows for :				
a) Modular Tiles :	In order to allow a nominal joint width of between 2 and 5mm			-
b) Non -modular Tiles :	So that the difference between the work size and normal size is not more than 2% (max 0.5mm)			-
The Permissible Deviation of the Average Size for the Each Tile (2 or 4Sides) From the Work Size (W)	+0.11.5 mm	±0.6%	±2.0 mm	EN ISO 10545-2
A.2 THICKNESS				
a) The Thickness Shall be specified	Declared thickness			-
b) The Permissible Deviation ,of the Average Thickness of Each Tile from the Work Size Thickness	+0.5 mm	±5%	+0.5 mm	EN ISO 10545-2
A.3 STRAIGHTNESS OF SIDES (Facial Sides)				
The Maximum Permissible Deviation from Straightness, Related to the Corresponding Wok Size	+0.75 mm	±0.5%	+1.5 mm	EN ISO 10545-2
A.4 RECTANGULARITY <sub>b</sub>				
The Maximum Permissible Deviation from Rectangularity, Related to the Corresponding Work Size	+0.75 mm	±0.5%	+2 mm	EN ISO 10545-2
A.5 SURFACE FLATNESS				
b) Edge Curvature, Related to the Corresponding Work Size	+0.75 mm	±0.5%	+2 mm	EN ISO 10545-2

CHARACTERISTICS	Requirements for Nominal Size N			Test Method
	7 cm < N < 15 cm	N ≥ 15 cm		
	(mm)	%	(mm)	
<b>B) PHYSICAL PROPERTIES</b>				
B.1 WATER ABSORPTION (IN %BY MASS )	E <sub>b</sub> ≤ 0.5 Individual maximum 0.6%			EN ISO 10545-3
B.2 BREAKING STRENGTH, FOR :				
a) Thickness ≥ 7.5mm	Not less than 1300N			EN ISO 10545-4
b) Thickness < 7.5mm	Not less than 700N			EN ISO 10545-4
B.3 FLEXURAL TENSILE STRENGTH OR MODULUS OF RUPTURE <sup>d</sup>	Minimum 35N /mm <sup>2</sup> Individual minimum 32N / mm <sup>2</sup>			EN ISO 10545-4
<b>B )PHYSICAL PROPERTIES</b>				
B.4 ABRASION RESISTANCE				
a) Resistance to Deep Abrasion of Unglazed Tiles : Removed Volume	Maximum 175 mm <sup>3</sup>			EN ISO 10545-6
b) Resistance to Surface Abrasion of Glazed Tiles Intended for Use on Floors <sup>e</sup>	Abrasion class and cycles passed			EN ISO 10545-7
B.5 COEFFICIENT OF LINEAR THERMAL EXPANSION				
- From Ambient Temperature to 100 °C	Declared value <sup>f</sup>			EN ISO 10545-8
B.6 THERMAL SHOCK RESISTANCE	Pass according to EN ISO 10545-1 <sup>g</sup>			EN ISO 10545-9
B.7 CRAZING RESISTANCE: Glazed Tiles <sup>h</sup>	Pass according to EN ISO 10545-1 <sup>g</sup>			EN ISO 10545-11 <sup>h</sup>
B.8 FROST RESISTANCE	Pass according to EN ISO 10545-1 <sup>g</sup>			EN ISO 10545-12
B.9 SLIPPERINESS	Declared value (s) <sup>g</sup>			PrCEN /TS 16165:2011 <sup>i</sup>
B.10 BOND STRENGHT / ADHESION <sup>j</sup> , FOR :				
a) Cementitious Adhesives <sup>k</sup>	Declared value (s)			EN 12004:2007,4.1 <sup>l</sup>
b) Dispersion Adhesives <sup>k</sup>	Declared value (s)			EN 12004:2007,4.2 <sup>l</sup>

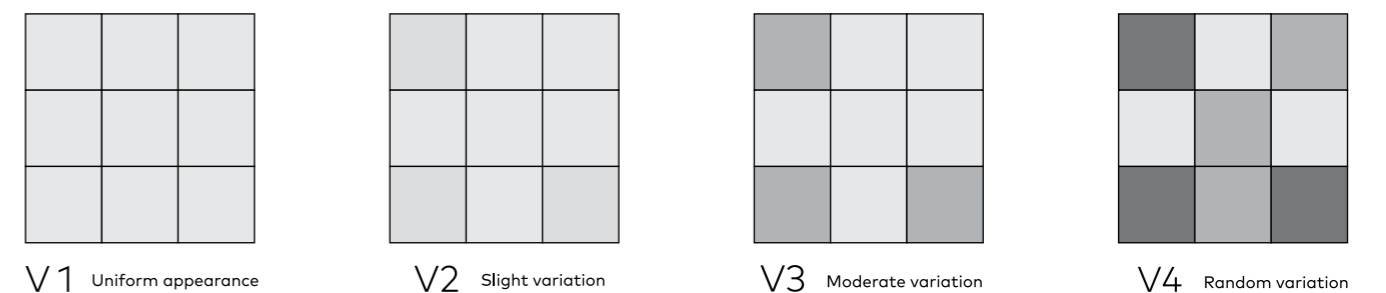
CHARACTERISTICS	Requirements for Nominal Size N			Test Method
	7 cm < N < 15 cm	N ≥ 15 cm		
	(mm)	%	(mm)	
a) Glazed Tiles	ΔE < 0.75			EN ISO 10545-16
b) Unglazed Tiles	ΔE < 1.0			EN ISO 10545-16
B.13 IMPACT RESISTANCE, as:				
- Coefficient of Restitution (COR)	Declared value <sup>f</sup>			EN ISO 10545-5
B.14 REACTION TO FIRE	(Class A1 or A1 <sub>FL</sub> ) <sup>m</sup>			-
B.15 TACTILITY <sup>n</sup>	Declared surface description <sup>o</sup>			CEN /TS 15209 <sup>l</sup>
C) CHEMICAL PROPERTIES				
C.1 RESISTANCE TO STAINING, FOR :				
a) Glazed Tiles	Minimum class 3			EN ISO 10545-14
b) Unglazed Tiles	Declared value <sup>f</sup>			EN ISO 10545-14
C.2 RESISTANCE TO CHEMICAL				
a) Resistance to Low Concentration of Acids and Alkalis	Declared value <sup>f</sup>			EN ISO 10545-13
b) Resistance to High Concentration of Acids and Alkalis	Declared value <sup>f</sup>			EN ISO 10545-13
c) Resistance to Household Chemicals and Swimming Pool Salts	Minimum class B			EN ISO 10545-13
C.3 RELEASE OF DANGEROUS SUBSTANCES				
a) Cadmium (in mg /dm <sup>2</sup> )	Declared value <sup>o</sup>			EN ISO 10545-15
b) Lead (in mg /dm <sup>2</sup> )	Declared value <sup>o</sup>			EN ISO 10545-15
c) Other Dangerous Substances <sup>o</sup>	Declared value			As Relevant

- a) Similar joint widths may be used to apply to the traditional systems based on non-metric sizes.
- b) Not applicable for tiles having curved shapes.
- c) Because of firing, a slight variation from the standard color is unavoidable. This does not apply to intentional irregularities of color variation of the face of tiles (which can be unglazed, glazed, or partly glazed) or to the color variation over a tile area which is characteristic of the given tile and desirable. Spots or colored dots which are introduced for decorative purposes are not considered a defect.
- d) Not applicable to ceramic tiles with breaking strength > 3000 N
- e) Where required, the abrasion class resistance according to Annex M may be declared.
- f) See Annex N additional information on applicability.
- g) See table 2 for uses where it is applicable.
- h) Certain decorative effects may have a tendency to craze. They are to be identified by the manufacturer, in which case the crazing test given in EN ISO 11-10545 is not applicable.
- i) Unless a different test method is required by national regulations in the market of the relevant member state(s) for the intended use, in which case the test method and result shall be declared as given therein (as long as consolidated European test method is not available).
- j) For intended uses subject to requirements against accidental fall of the object on to transit areas only. Tests are to be performed using the actual tiles and suitable adhesive and/or mortar.
- k) For the types of adhesives, defined in EN 12004:2007 only.
- l) The proposed test methods are intended to determine the adhesion strength of the adhesive and have not been developed to determine ceramic the characteristics. Thus, there might be no correlation between the declared bond strength and the performance of the tile in use (other factors proper installation techniques and type of background support will influence the final performance).
- m) Ceramics, as a homogeneously distributed material used for ceramic tiles, is considered as a material of known and stable performance with respect to the reaction to fire performance as it does not consist of any organic material. As such it does not contribute to the fire and it may be considered without the need for testing (CWT) as the class AT material<sup>7</sup>. The reaction to the fire performance of ceramic tiles may also be classified also as class AT according to EN ISO 1-13501.
- n) For tactile paving surface i.e. when required for blind or vision impaired persons.
- o) When relevant, see notes 1 and 2 in ZA.1 for the performance of the product concerning these characteristics, if any to be declared.

## Symbology



### SHADE VARIATION





Main Office:  
No. 80, West Brazil St, South Shirazi St,  
Mollasadra Ave, Tehran, Iran. (+98)2145609  
[www.pma.co.ir](http://www.pma.co.ir) | [www.pmaimperio.com](http://www.pmaimperio.com)  
Follow us on Instagram @pma.imperio